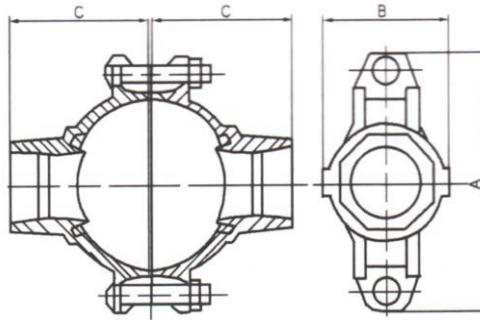
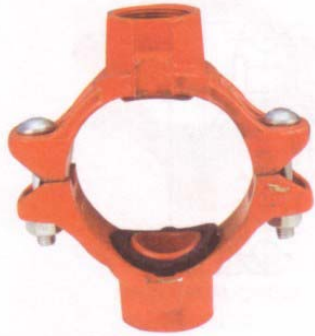


MECHANICAL OUTLET CROSS (THREADED)

Model: MCR01



Nominal Size Inches	Pipe O.D. mm/in	Working Pressure psi/kPa	Hole Dia. +1.6, 0 / +0.063, 0 mm/in	Dimensions			Bolt Size Dia. x Lg. in x mm	Net Weight Approx kg
				A mm/in	B mm/in	C mm/in		
2x1 ¹ / ₄	60.3X42.2 2.375X1.660	300 2068	45 1.75	116.0 4.57	76.0 2.99	62.0 2.44	³ / ₈ X55	1.21
2x1 ¹ / ₂	60.3X48.3 2.375X1.900	300 2068	45 1.75	116.0 4.57	76.0 2.99	62.0 2.44	³ / ₈ X55	1.26
2 ¹ / ₂ x1 ¹ / ₄	73.0X42.2 2.875X1.660	300 2068	51 2.00	144.0 5.67	84.5 3.33	73.0 2.87	¹ / ₂ X60	1.75
2 ¹ / ₂ x1 ¹ / ₂	73.0X48.3 2.875X1.900	300 2068	51 2.00	144.0 5.67	84.5 3.33	73.0 2.87	¹ / ₂ X60	1.84
3x1 ¹ / ₄	88.9X42.2 3.500X1.660	300 2068	51 2.00	160.0 6.30	85.5 3.37	80.0 3.15	¹ / ₂ X75	1.52
3x1 ¹ / ₂	88.9X48.3 3.500X1.900	300 2068	51 2.00	160.0 6.30	90.0 3.54	80.0 3.15	¹ / ₂ X75	1.90
3X2	88.9X60.3 3.500X2.375	300 2068	64 2.50	160.0 6.30	104.0 4.09	80.0 3.15	¹ / ₂ X75	2.59
4X1 ¹ / ₄	114.3X42.2 4.500X1.660	300 2068	51 2.00	186.0 7.32	89.0 3.50	95.0 3.74	¹ / ₂ X75	2.44
4x1 ¹ / ₂	114.3X48.3 4.500X1.900	300 2068	51 2.00	186.0 7.32	89.0 3.50	97.0 3.82	¹ / ₂ X75	2.60
4X2	114.3X60.3 4.500X2.375	300 2068	64.0 2.50	186.0 7.32	104.4 4.11	100.0 3.94	¹ / ₂ X75	3.03
4x2 ¹ / ₂	114.3X76.1(73) 4.500X3.000	300 2068	70.0 2.75	186.0 7.32	104.4 4.11	100.0 3.94	¹ / ₂ X75	3.31
4X3	114.3X88.9 4.500X3.500	300 2068	89.0 3.50	186.0 7.32	124.0 4.88	100.0 3.94	¹ / ₂ X75	4.06
5X1 ¹ / ₄	141.3X42.2 5.563X1.660	300 2068	51 2.00	226.0 8.90	98.0 3.86	110.0 4.33	⁵ / ₈ X85	3.62
6X2	168.3X60.3 6.625X2.375	300 2068	64.0 2.50	246.0 9.69	114.0 4.50	135.0 5.31	⁵ / ₈ X110	4.55
6X2 ¹ / ₂	168.3X73.0 6.625X2.875	300 2068	70.0 2.75	246.0 9.69	115.0 4.53	134.0 5.28	⁵ / ₈ X110	5.62
6X4	168.3X114.3 6.625X4.500	300 2068	114.0 4.50	246.0 9.69	157.0 6.18	141.0 5.55	⁵ / ₈ X110	8.41

Pipe: Schedule 10, 40 steel pipe.

Material: Housing - Ductile iron conforming to ASTM A-536, Grade 65-45-12

Protective Coatings: ▪ Non-lead orange paint ▪ Fire brigade red (optional) non - lead paint
▪ Hot dipped galvanized conforming to ASTM A-153

Gasket: (Specify when ordering) Gasket selection should be verified to be compatible for the specific application.

(See Data sheet TD3000R for aid in selecting proper gasket)

Specifications, illustrated materials and descriptions are accurate as known at time of publication and are subject to change without notice.