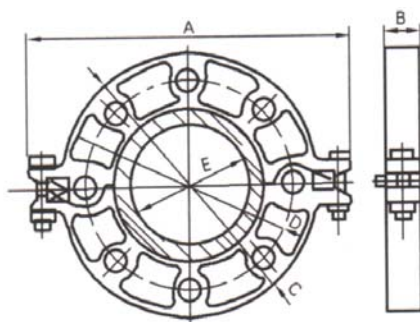


## GROOVED FLANGE

Model: FLA01



Nominal Size Inches	Pipe O.D. mm/in	Working Pressure psi/kPa	Dimensions					Bolt Size		Net Weight Approx kg
			A mm/in	B mm/in	C mm/in	D mm/in	E mm/in	No. - Size mm		
2	60.3	300	220.0	24.0	165.0	125.0	57.5	2-M12X55	4-M16	2.30
	2.375	2068	8.66	0.95	6.50	4.92	2.26			
2 1/2	73	300	235.0	24.0	182.0	145.0	69.8	2-M12X55	4-M16	2.60
	2.875	2068	9.25	0.95	7.16	5.70	2.74			
3 O.D.	76.1	300	235.0	24.0	185.0	145.0	72.7	2-M12X55	4-M16	2.65
	3.000	2068	9.25	0.95	7.28	5.70	2.86			
3	88.9	300	252.0	24.0	200.0	160.0	85.5	2-M12X55	8-M16	3.10
	3.500	2068	9.92	0.95	7.87	6.30	3.37			
4	114.3	300	280.0	25.5	229.0	180.0	110.5	2-M12X65	8-M16	4.15
	4.500	2068	11.02	1.00	9.00	7.09	4.35			
6 1/2 O.D.	165.1	300	346.0	25.5	280.0	240.0	160.8	2-M12X65	8-M16	5.25
	6.500	2068	13.62	1.00	11.00	9.45	6.33			
6	168.3	300	346.0	25.5	280.0	240.0	164.3	2-M12X65	8-M16	5.20
	6.625	2068	13.62	1.00	11.00	9.45	6.47			
8	219.1	300	405.0	32.0	340.0	295.0	215.3	2-M12X65	12-M16	8.55
	8.625	2068	15.95	1.26	13.40	11.61	8.48			

Model	Pipe	Size (in.)
FLA01	Schedule 10 steel pipe	2, 2-1/2, 3, 4, 6, 8
FLA01	BS1387 Schedule 10 steel pipe	3O.D., 6-1/2 O.D.
FLA01	Schedule 40 steel pipe	2, 2-1/2, 3, 4, 6, 8
FLA01	BS1387 Schedule 40 steel pipe	3O.D., 6-1/2 O.D.

**Material: Housing** - Ductile iron conforming to ASTM A-536, Grade 65-45-12

**Protective Coatings:** ▪ Non-lead orange paint ▪ Fire brigade red (optional) non - lead paint

▪ Hot dipped galvanized conforming to ASTM A-153

**Gasket: (Specify when ordering)** Gasket selection should be verified to be compatible for the specific application.

(See Data sheet TD3000R for aid in selecting proper gasket)

Specifications, illustrated materials and descriptions are accurate as known at time of publication and are subject to change without notice.